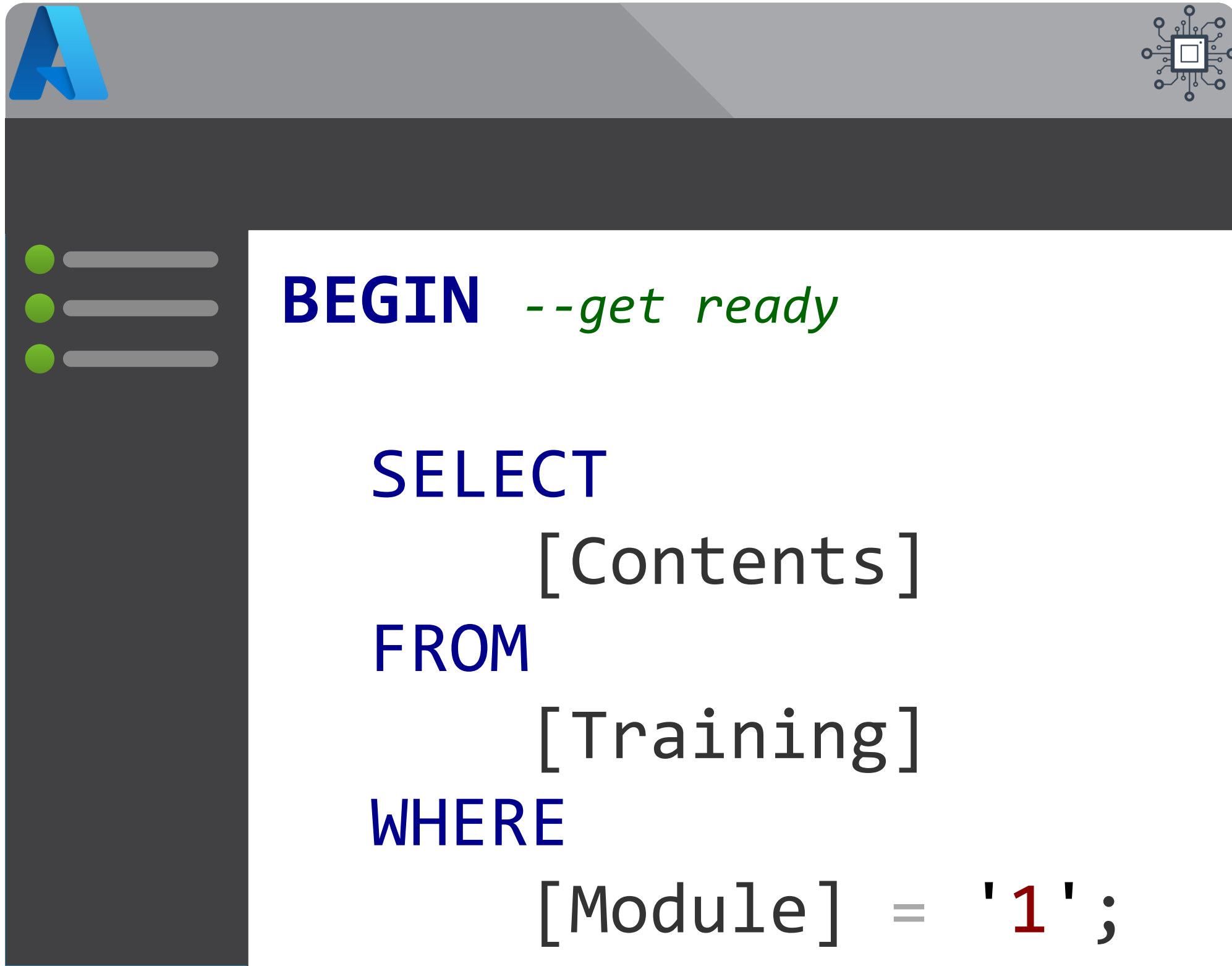


# Module 1

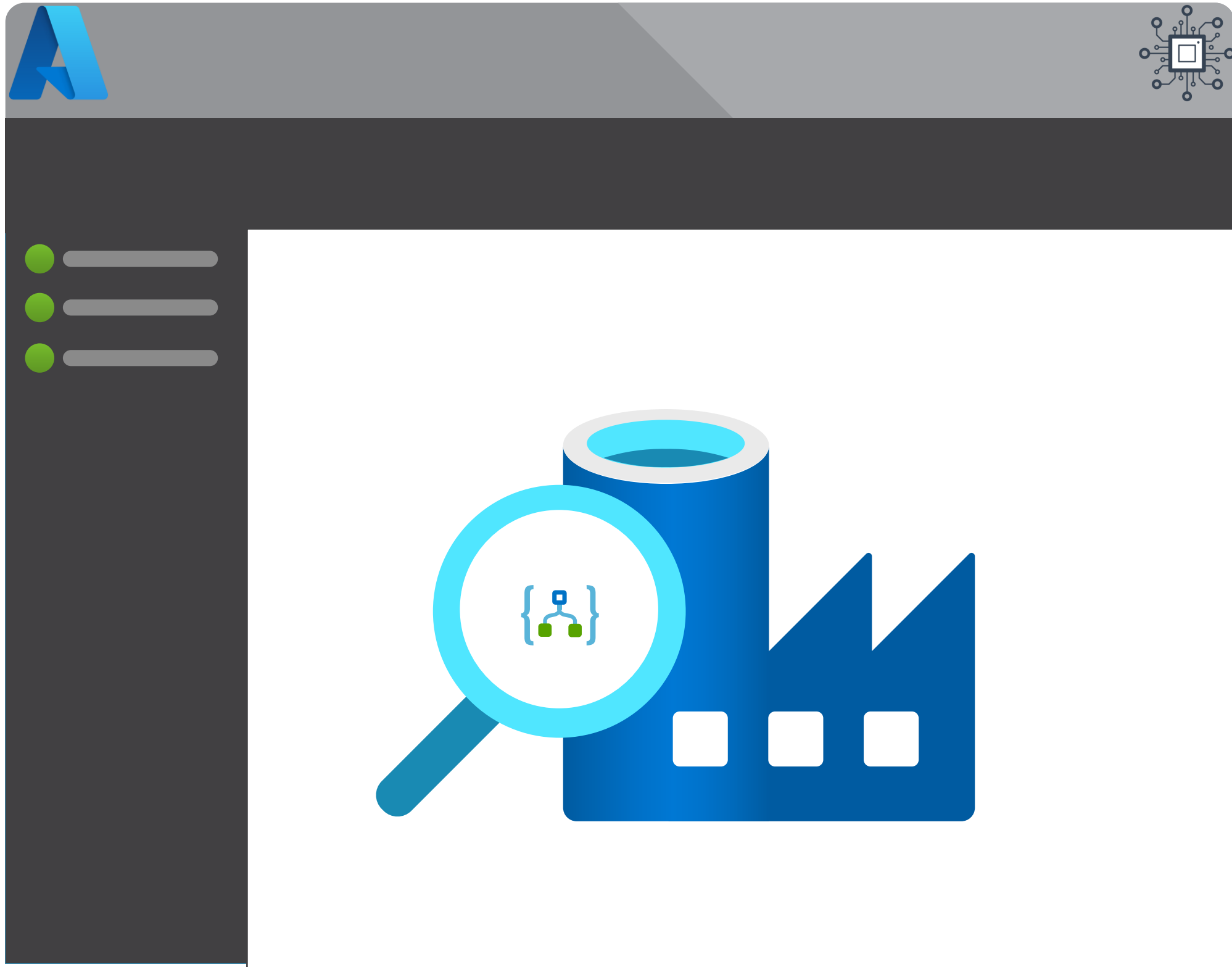
## Pipeline Fundamentals



- The History of Azure Orchestration
- Synapse Analytics vs Data Factory
- Integration Components
- Common Activities
- Execution Dependencies

# Module 1

## Pipeline Fundamentals



- The History of Azure Orchestration
- Synapse Analytics vs Data Factory
- Integration Components
- Common Activities
- Execution Dependencies



# A Quick History Lesson



SQL Server  
SQL Agent



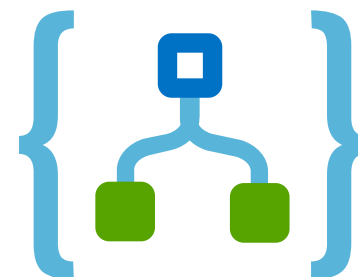
SQLDB  
(PaaS)



Automation



Logic Apps



Functions



SQL Managed  
Instance

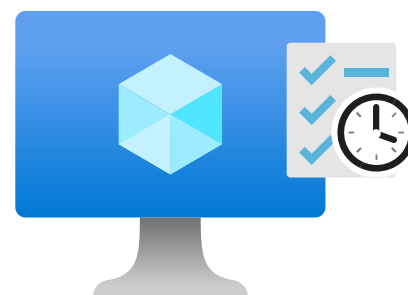


DTU Jobs

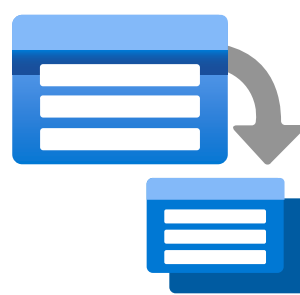
Elastic Job Agent



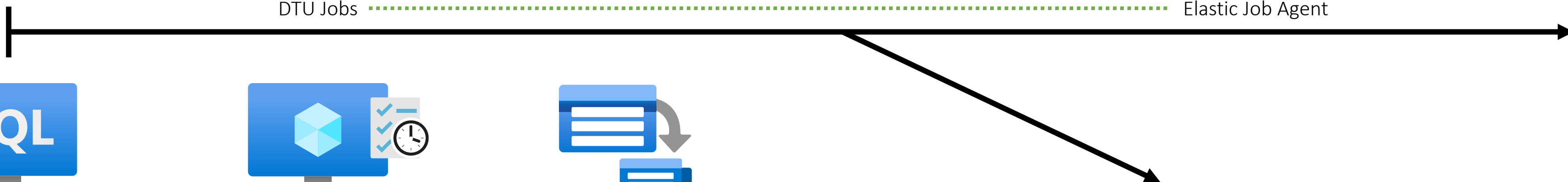
SQL Server  
Virtual Machine



Virtual Machine  
Job Schedule

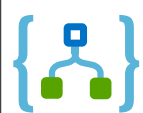
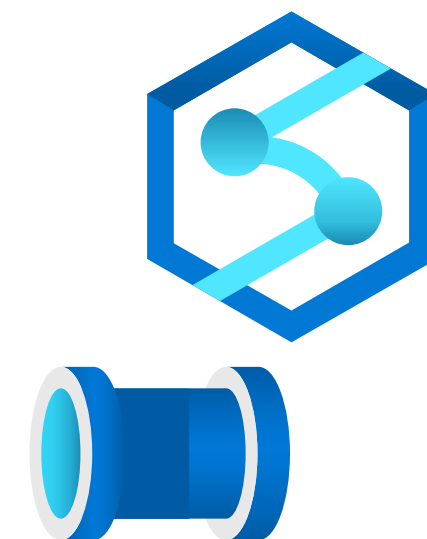
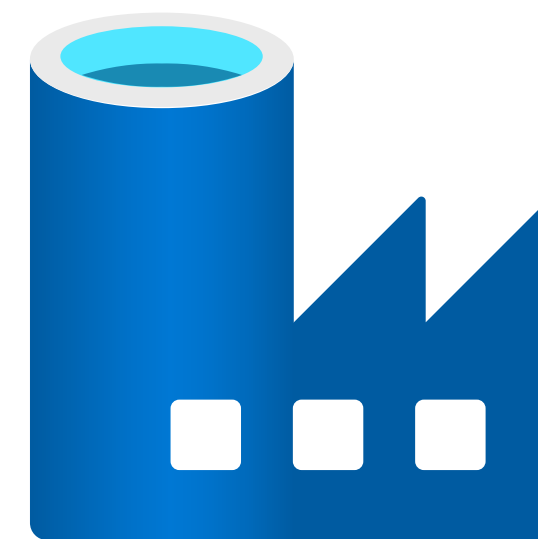
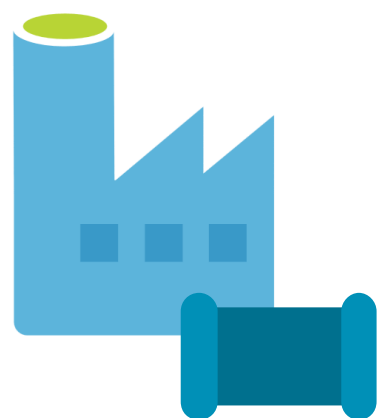
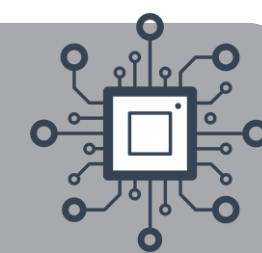


Batch





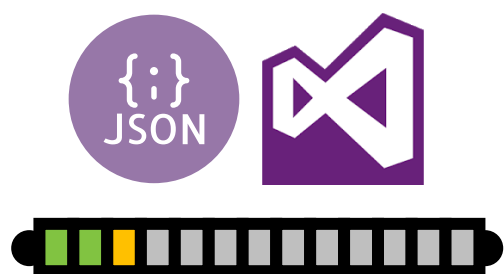
# A Quick History Lesson



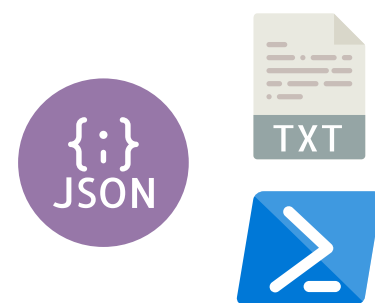
v1  
July  
2016

v2  
Sept  
2017

Oct  
2020



Time Slices  
VS2015 Projects



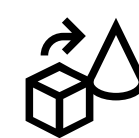
Notepad  
Development



New UI



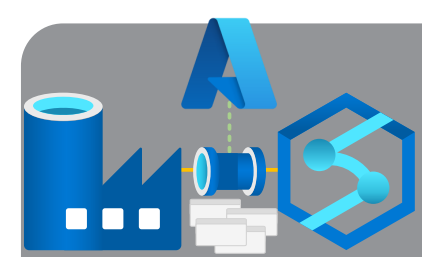
Source  
Control



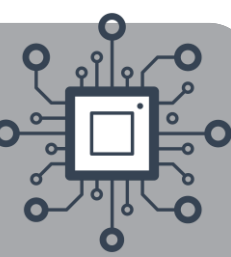
Data  
Flows



Private  
Endpoints



# What is Azure Data Factory (ADF)?



[Home](#) / [Products](#) / [Data Factory](#)

## Data Factory

Hybrid data integration service that simplifies ETL at scale

[Start for free >](#)

Already an Azure customer? [Getting started >](#)

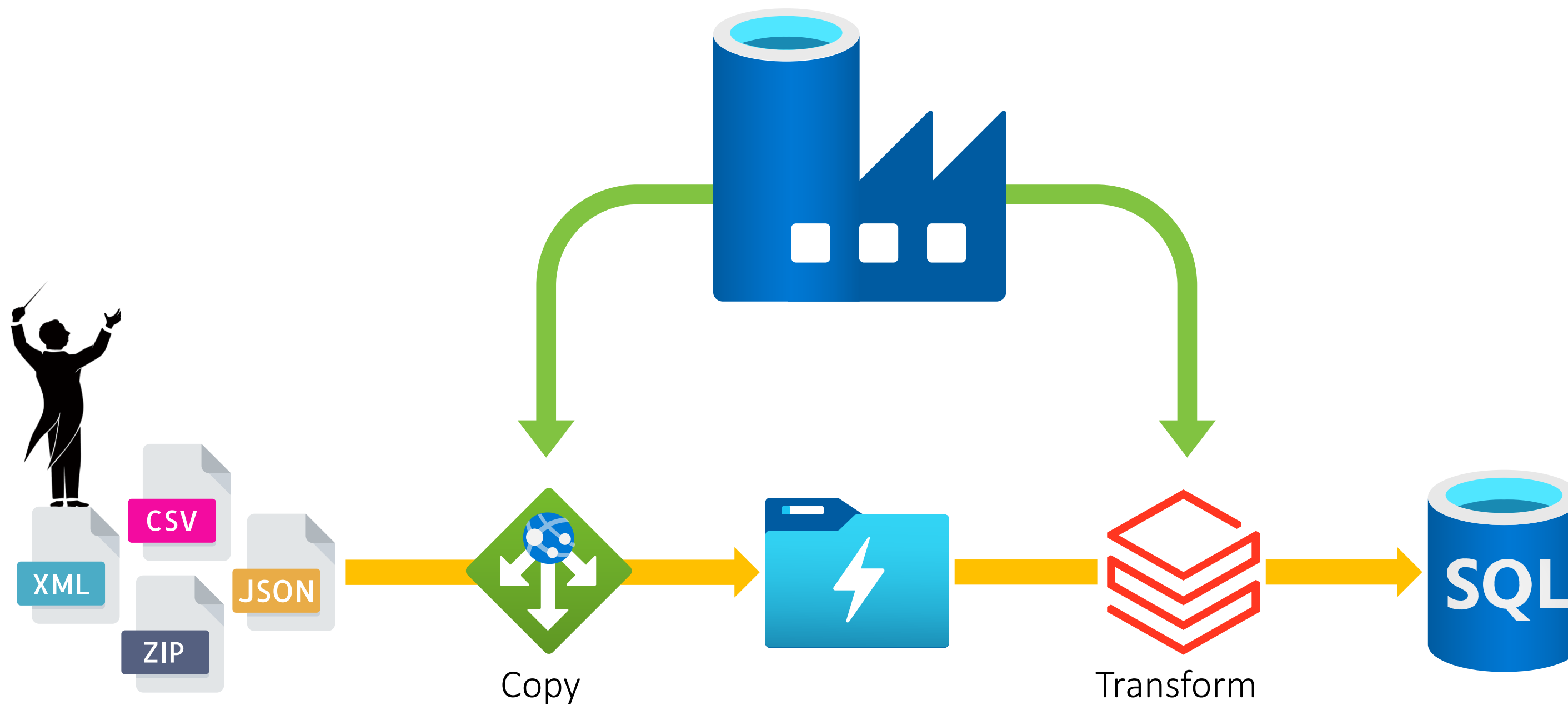
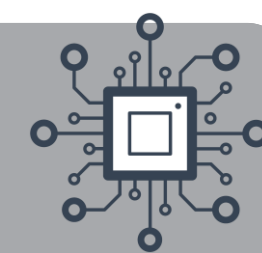
[Product overview](#) [Features](#) [Security](#) [Pricing](#) [Customer stories](#) [Getting started](#) [Documentation](#) [FAQs](#)

### Accelerate data integration

Integrate data silos with Azure Data Factory, a service built for all data integration needs and skill levels. Easily construct ETL and ELT processes code-free within the intuitive visual environment, or write your own code. Visually integrate data sources using more than 90+ natively built and maintenance-free connectors at no added cost. Focus on your data – the serverless integration service does the rest.

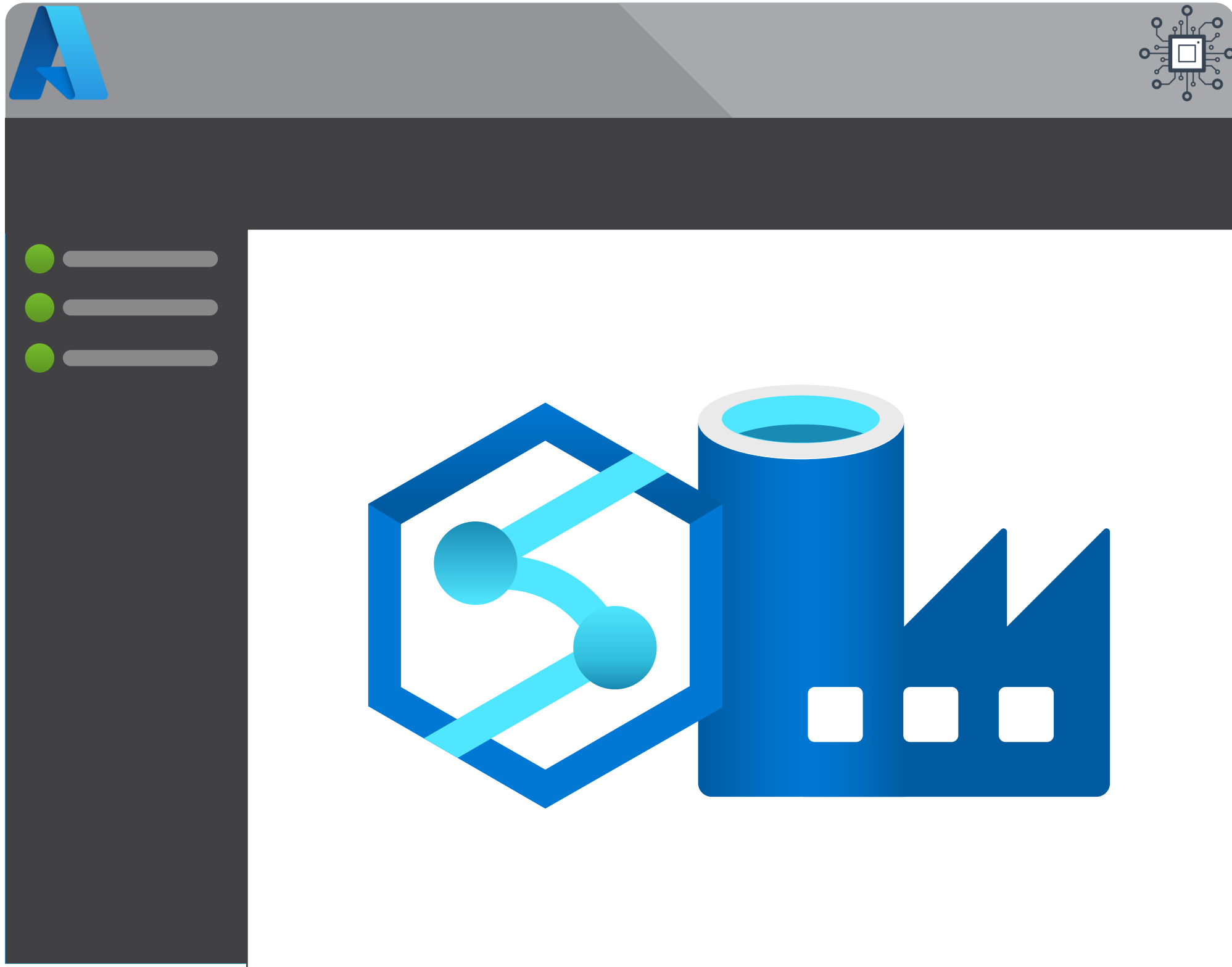


# What is Azure Data Factory (ADF)?



# Module 1

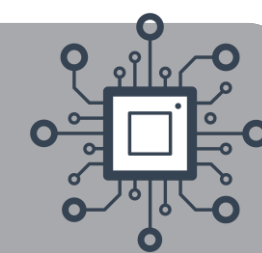
## Pipeline Fundamentals



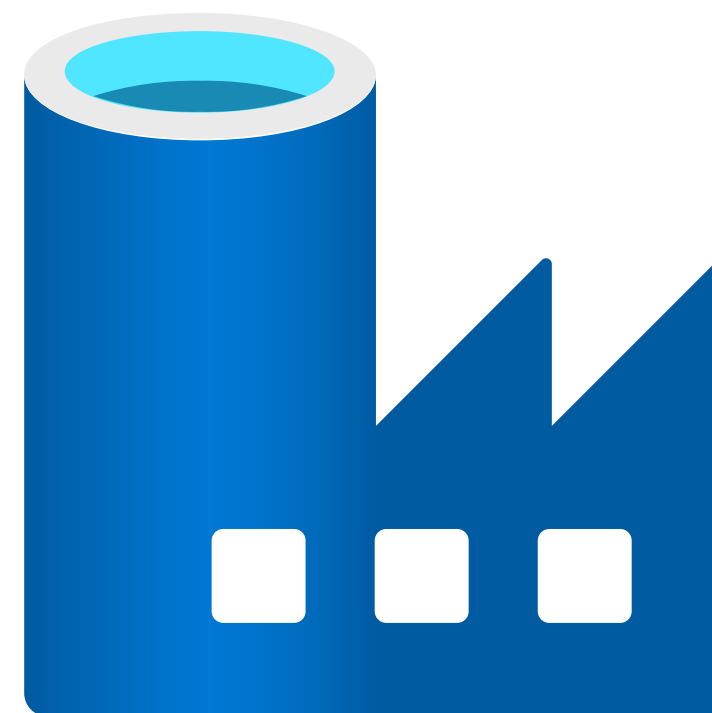
- The History of Azure Orchestration
- Synapse Analytics vs Data Factory
- Integration Components
- Common Activities
- Execution Dependencies



# Synapse Analytics vs Data Factory



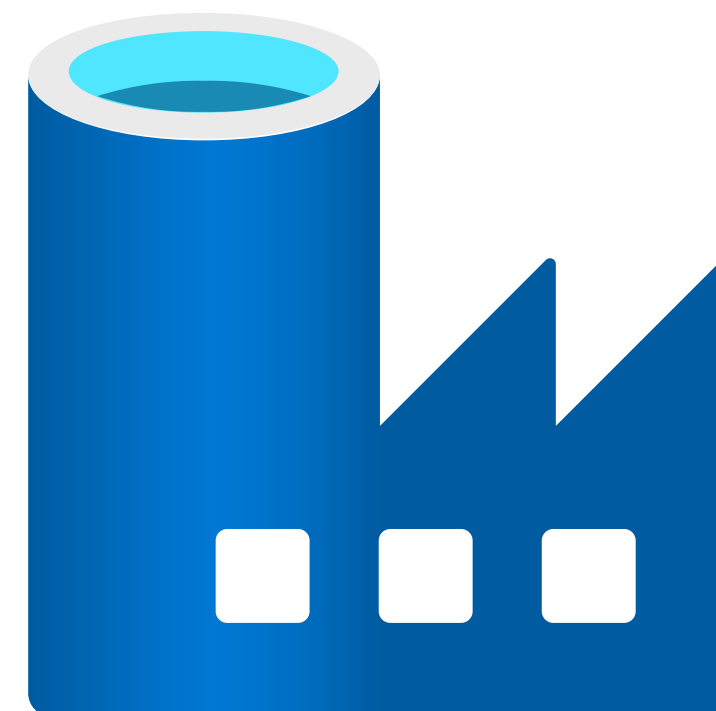
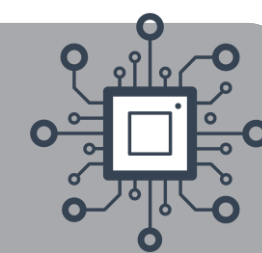
<https://docs.microsoft.com/en-us/azure/synapse-analytics/data-integration/concepts-data-factory-differences>





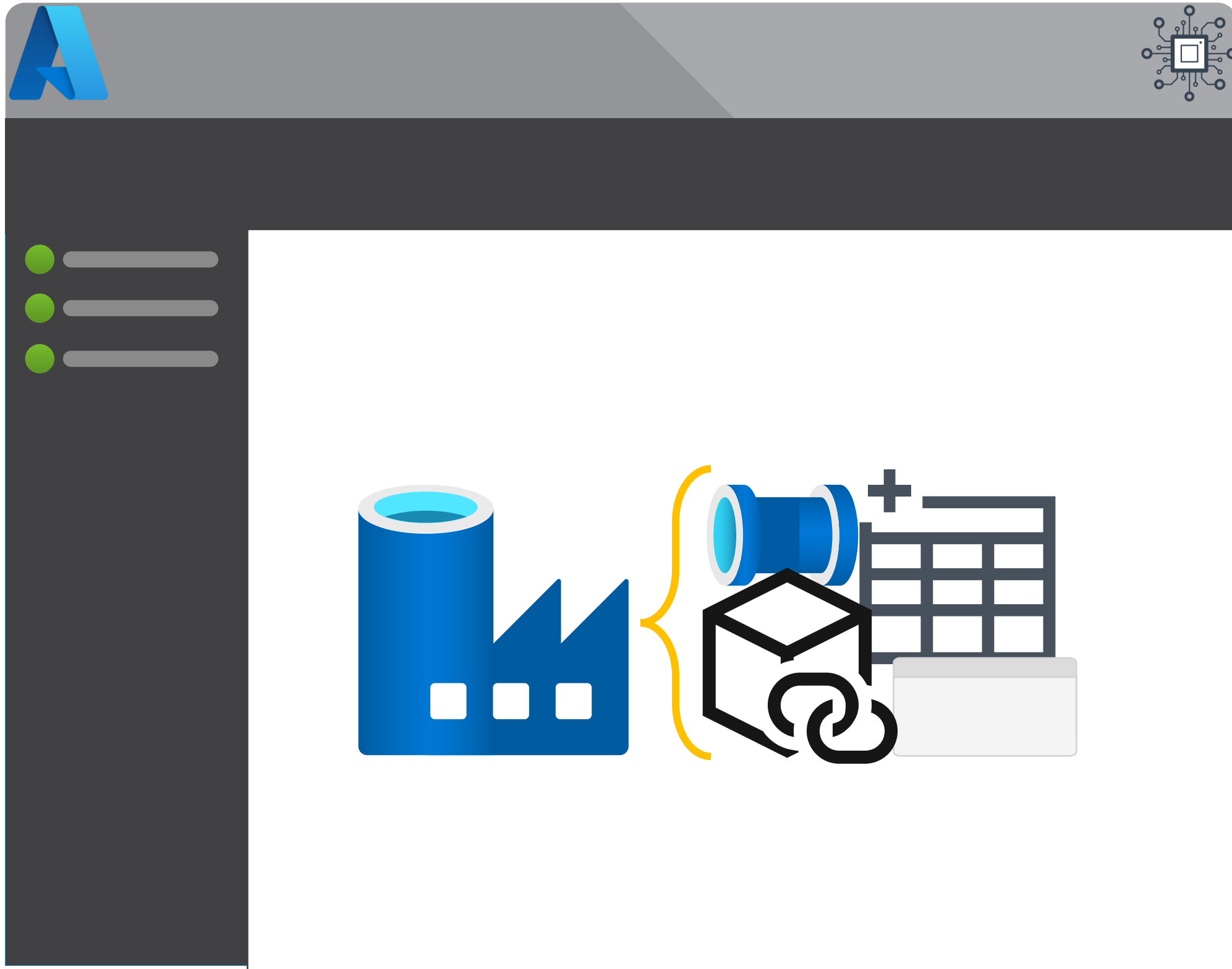


# Synapse Analytics vs Data Factory

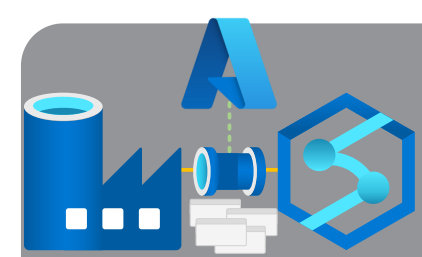


# Module 1

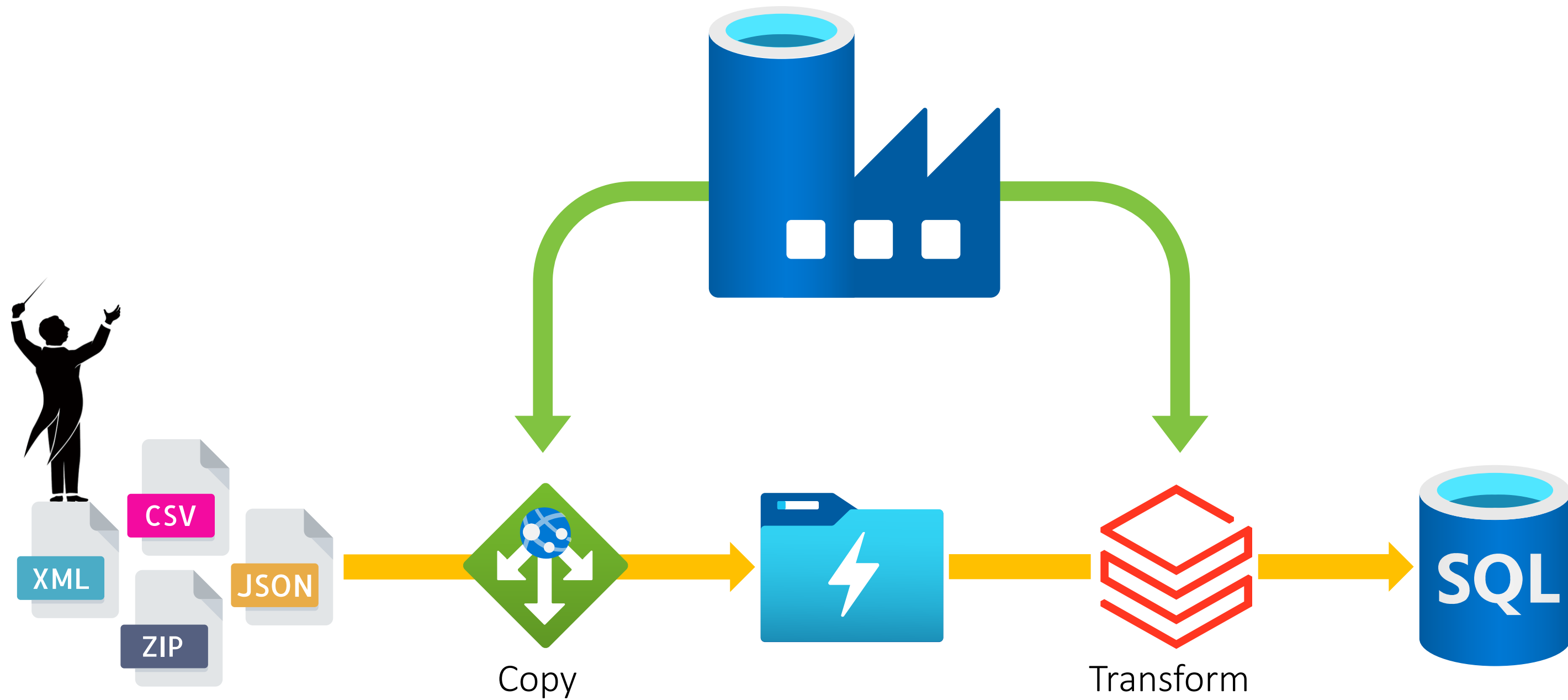
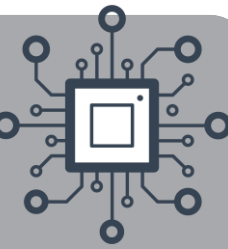
## Pipeline Fundamentals



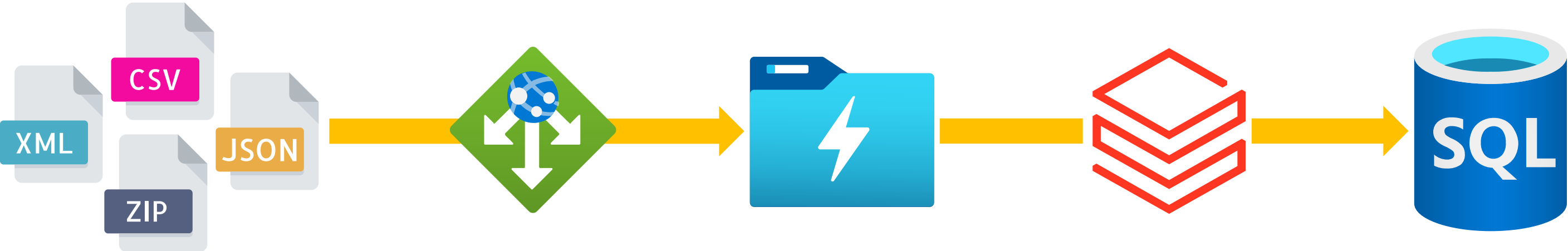
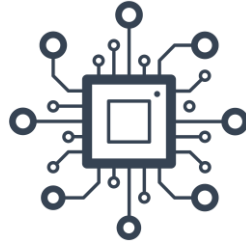
- The History of Azure Orchestration
- Synapse Analytics vs Data Factory
- **Integration Components**
- Common Activities
- Execution Dependencies



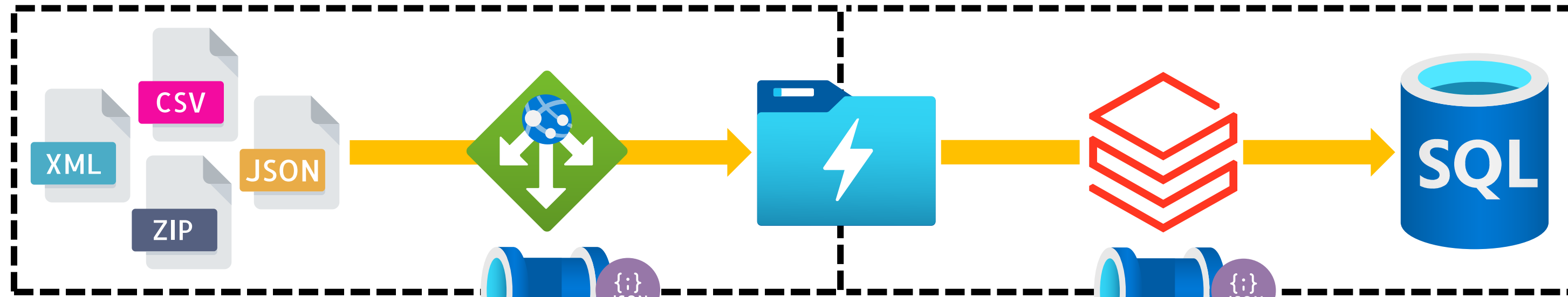
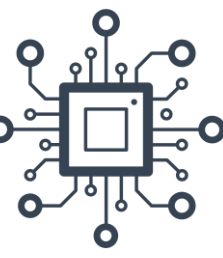
# Data Factory Components



# Data Factory Components



# Data Factory Components



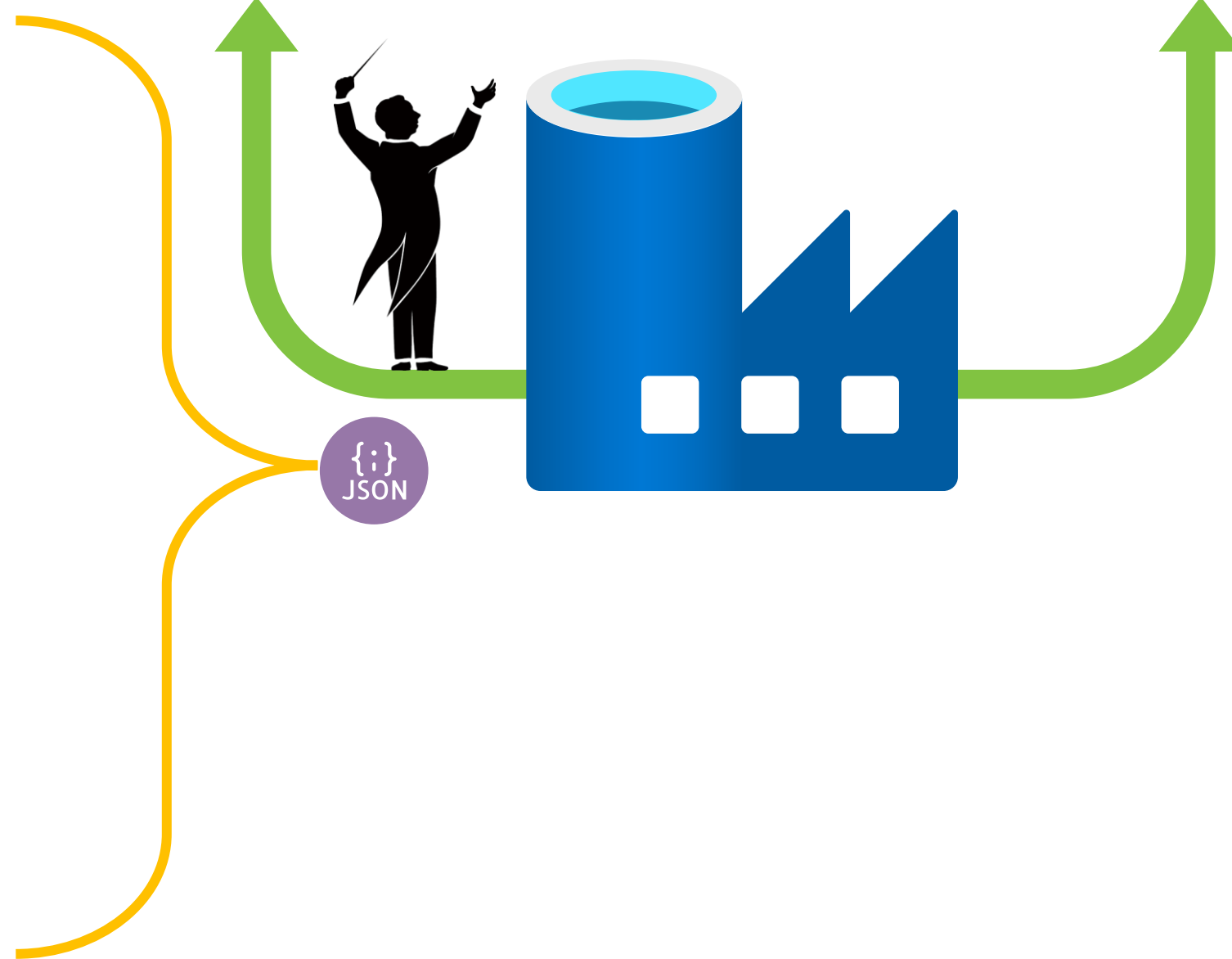
1 Linked Services

2 Datasets

3 Activities

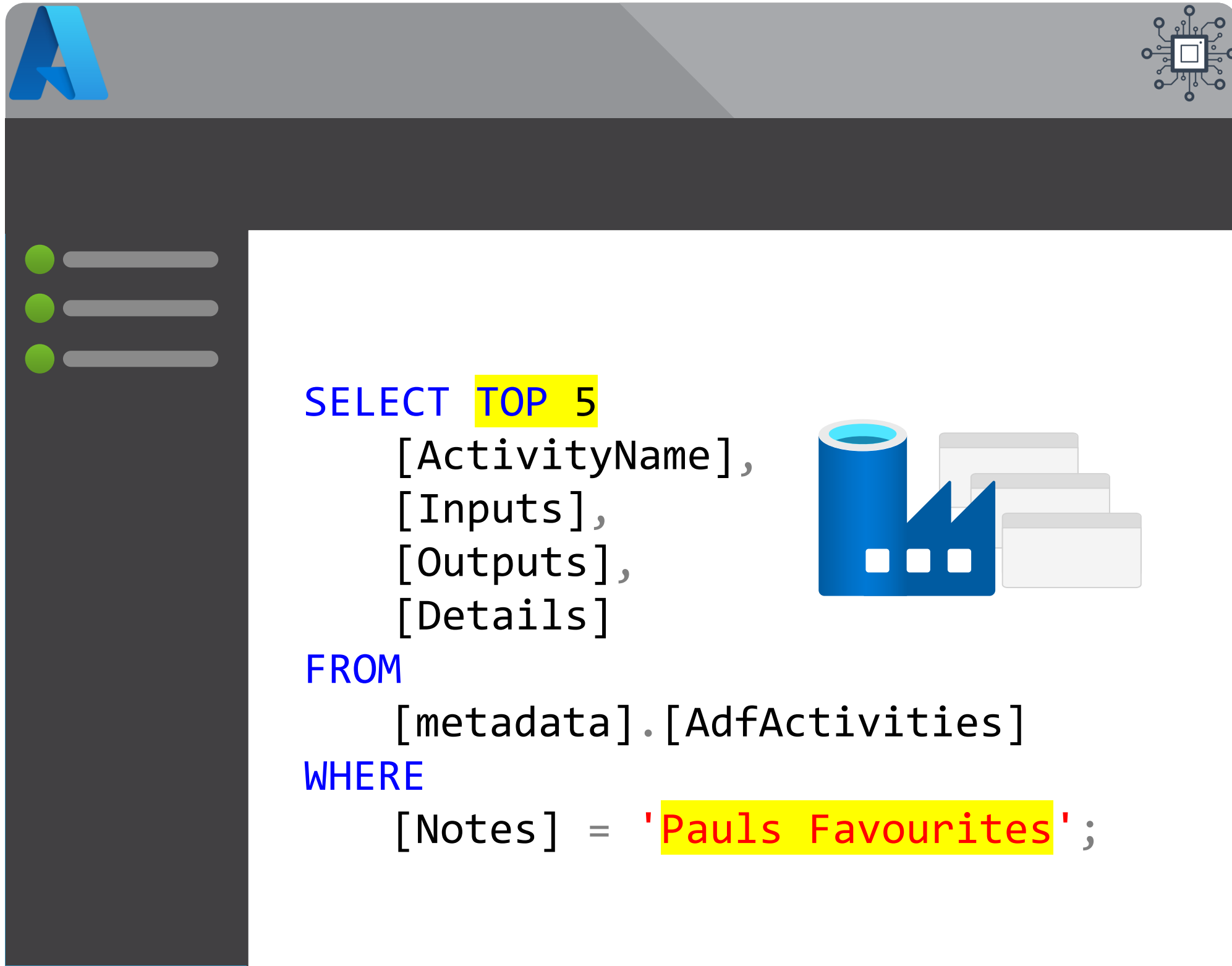
4 Pipelines

5 Triggers

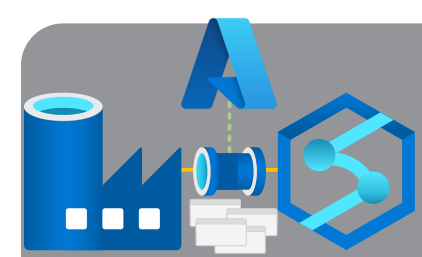


# Module 1

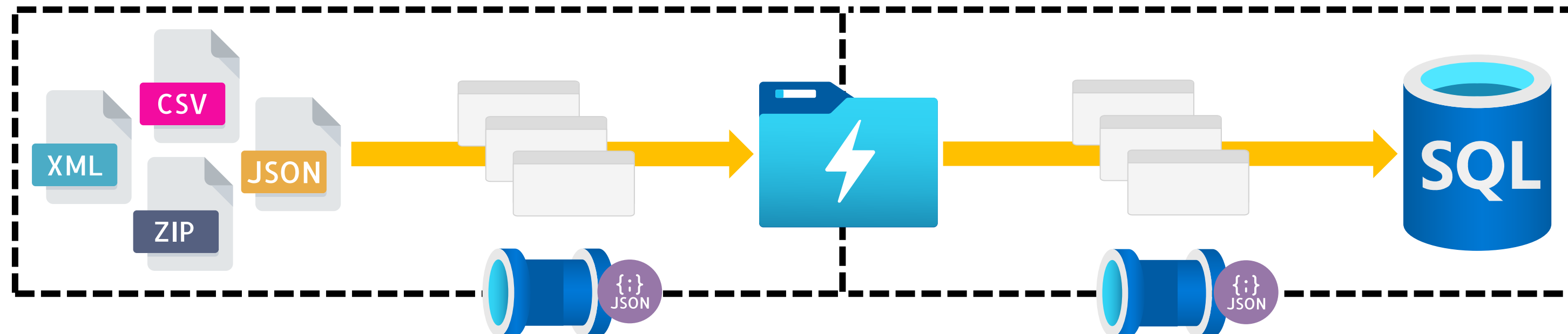
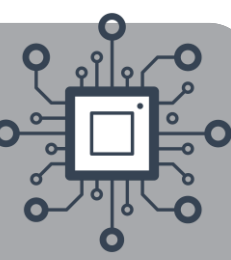
## Pipeline Fundamentals



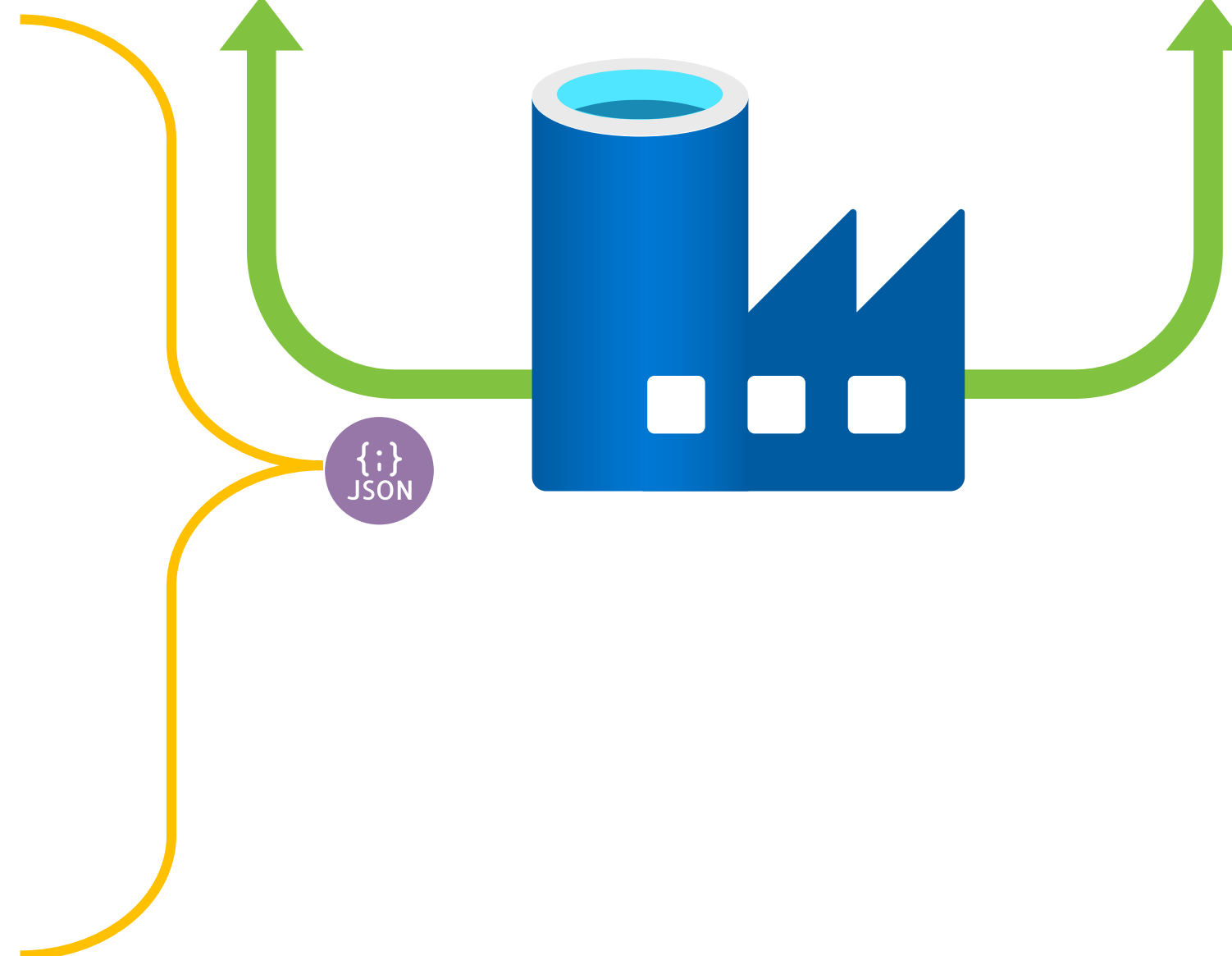
- The History of Azure Orchestration
- Synapse Analytics vs Data Factory
- Integration Components
- Common Activities
- Execution Dependencies



# Data Factory Common Activities

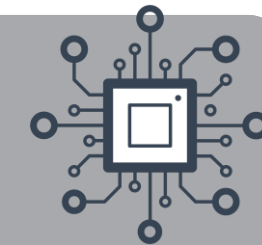


- 1 Linked Services
- 2 Datasets
- 3 Activities
- 4 Pipelines
- 5 Triggers

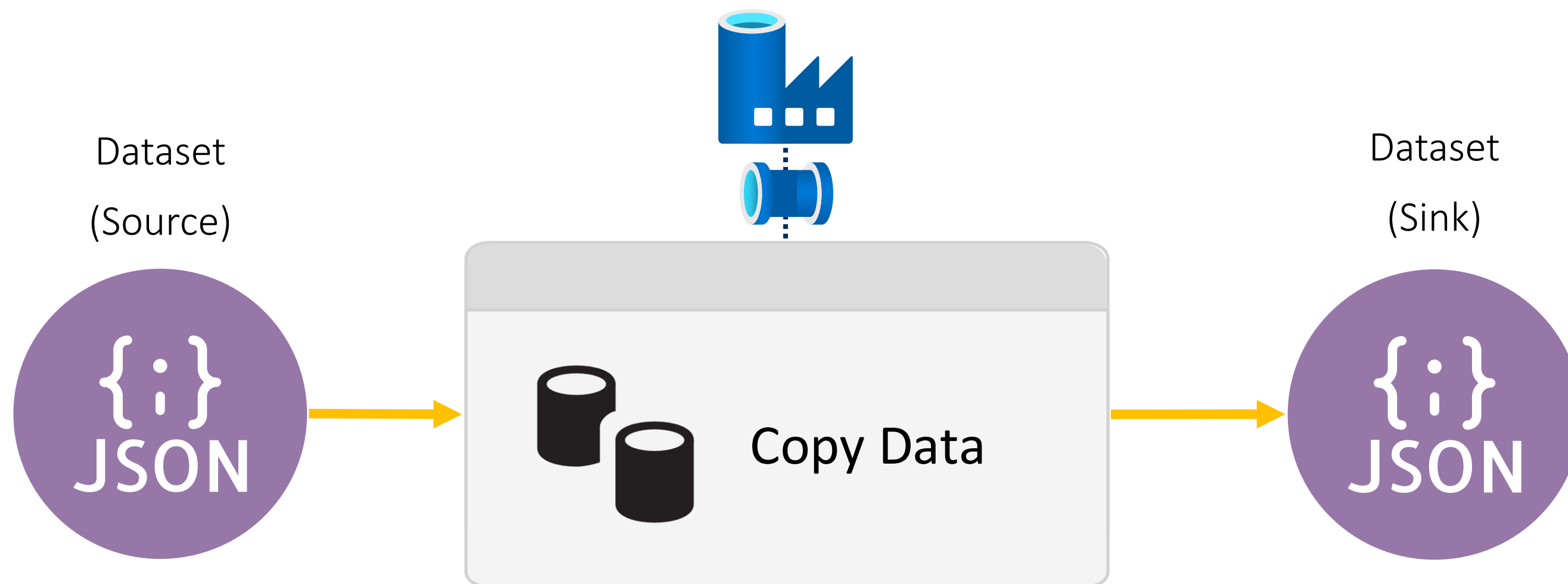




# Copy



Getting your data from A to B (not a Move operation)



☐ Auto Scaling

☐ Transactional Restarts

☐ Handle Zip Compression

☐ Attribute Mapping and Schema Drift

☐ Handle Failed Rows

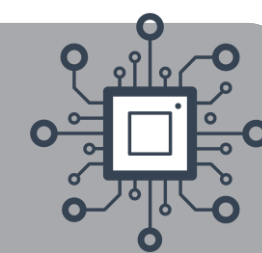
☐ Add Custom Attributes

☐ Parse Excel & JSON Files

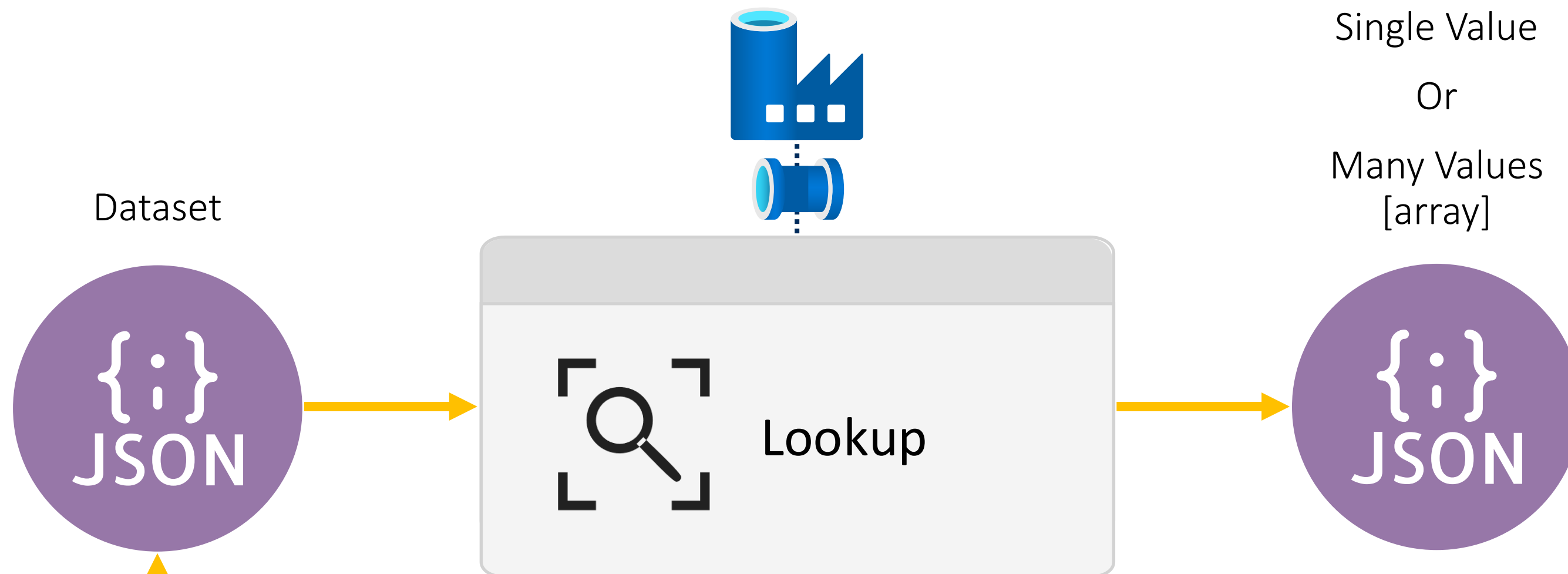




# Lookup



Get value(s) to support other control flow activities

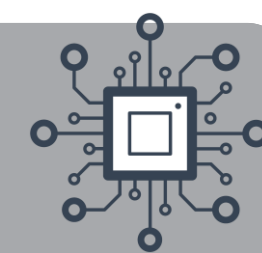


```
SELECT  
  [SourceDIR],  
  [TargetDIR],  
  [FileName]  
FROM  
  [dbo].[FileList]
```

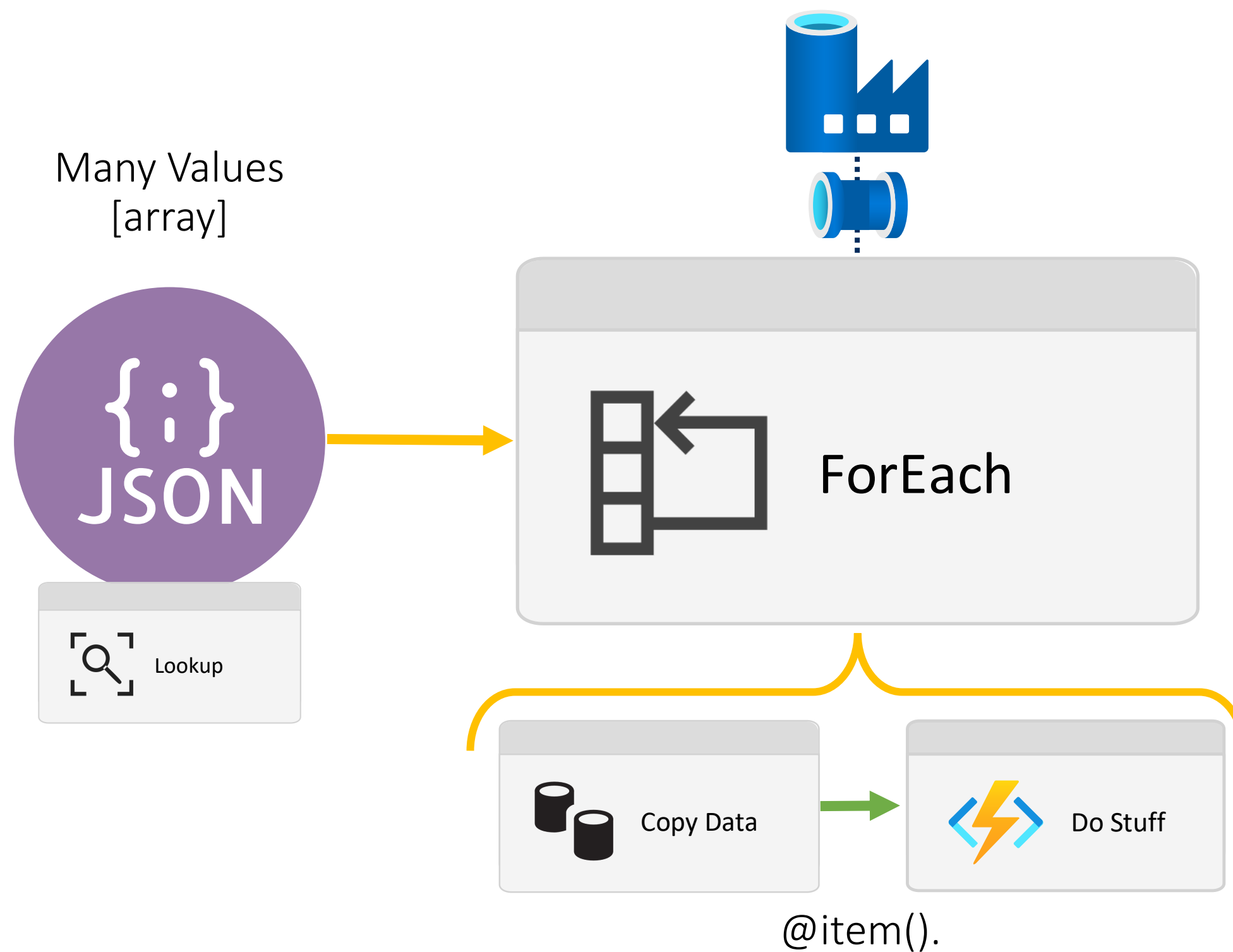
```
{  
  "count": 3,  
  "value": [  
    {  
      "SourceDIR": "ADFRoot\\ForUpload\\People\\",  
      "TargetDIR": "RAW",  
      "FileName": "Address.csv"  
    },  
    {  
      "SourceDIR": "ADFRoot\\ForUpload\\People\\",  
      "TargetDIR": "RAW",  
      "FileName": "Gender.csv"  
    },  
    {  
      "SourceDIR": "ADFRoot\\ForUpload\\People\\",  
      "TargetDIR": "RAW",  
      "FileName": "Ids.csv"  
    }  
  ]  
}
```



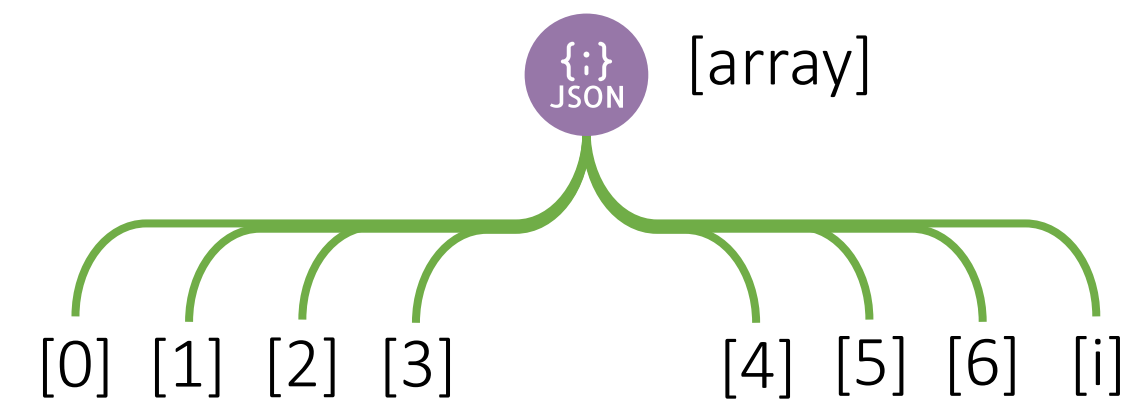
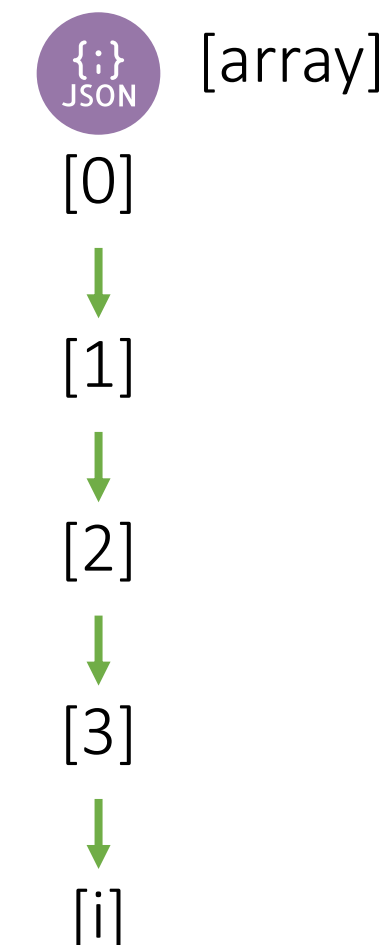
# For Each



Iterating over other control flow activities



IsSequential:  
true



Batch Count Default: 20

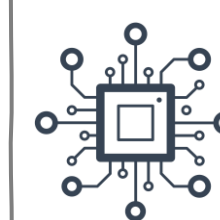
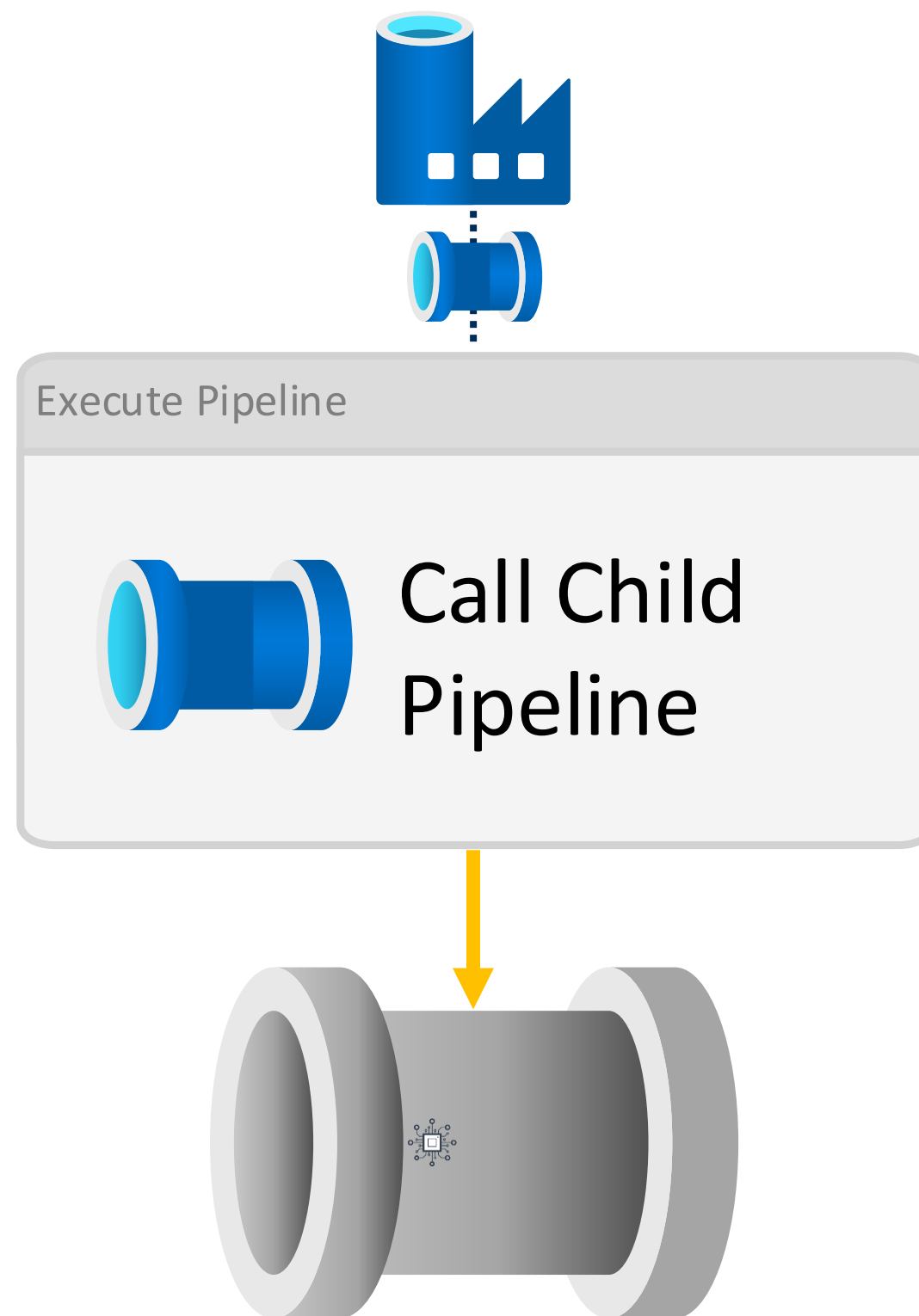
Batch Count Max: 50



# Execute Pipeline

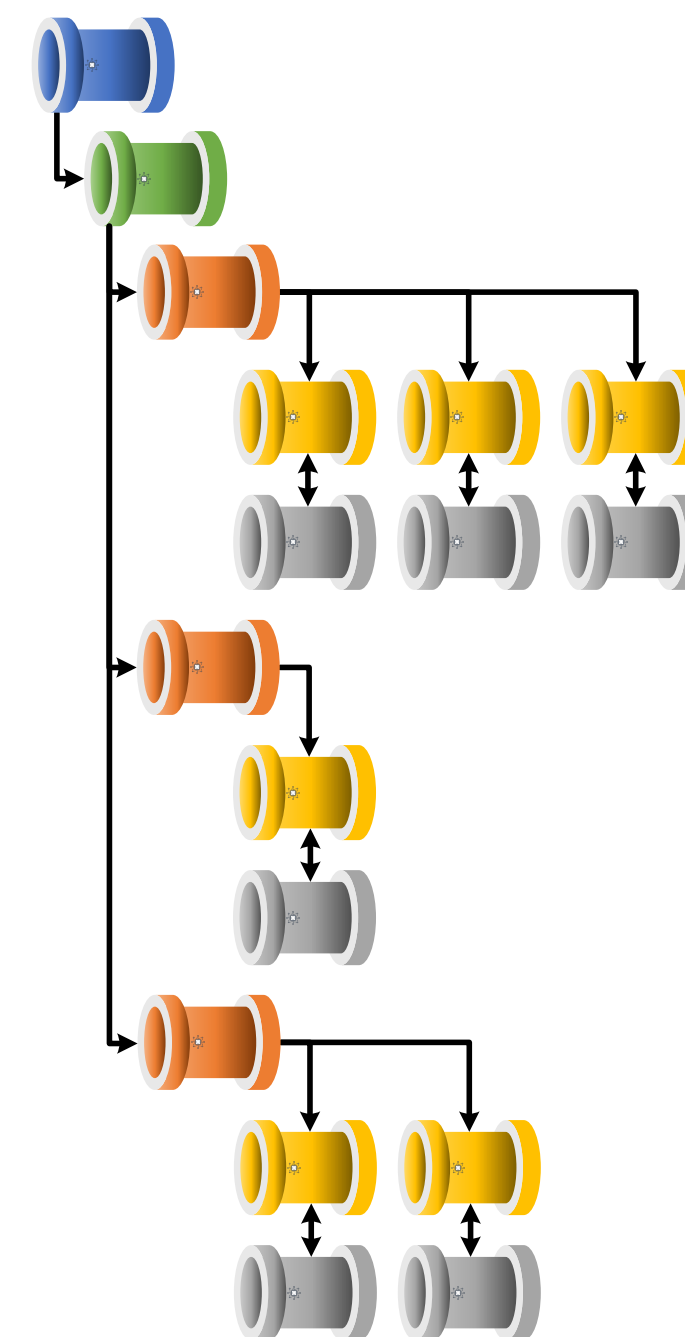


Chaining pipeline executions via an activity



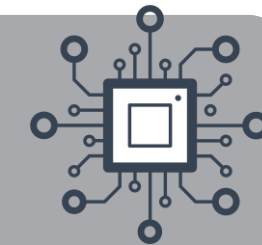
Pipeline Hierarchies Generation Control

<https://mrpaulandrew.com/2019/09/25/azure-data-factory-pipeline-hierarchies-generation-control>

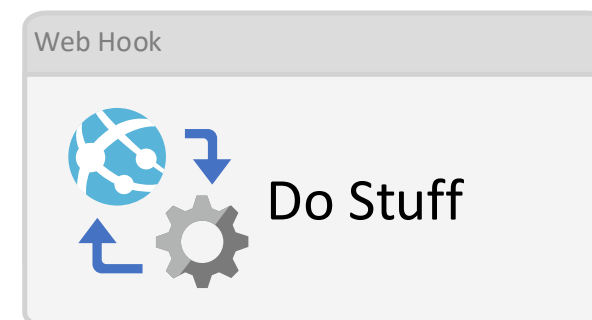
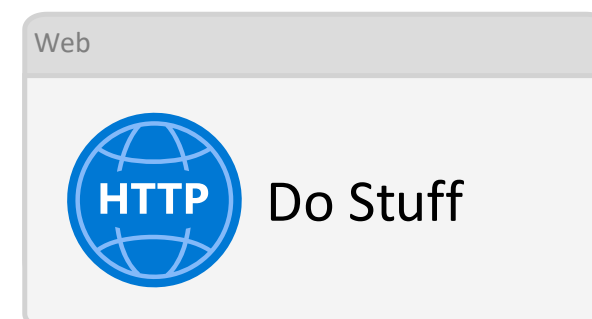
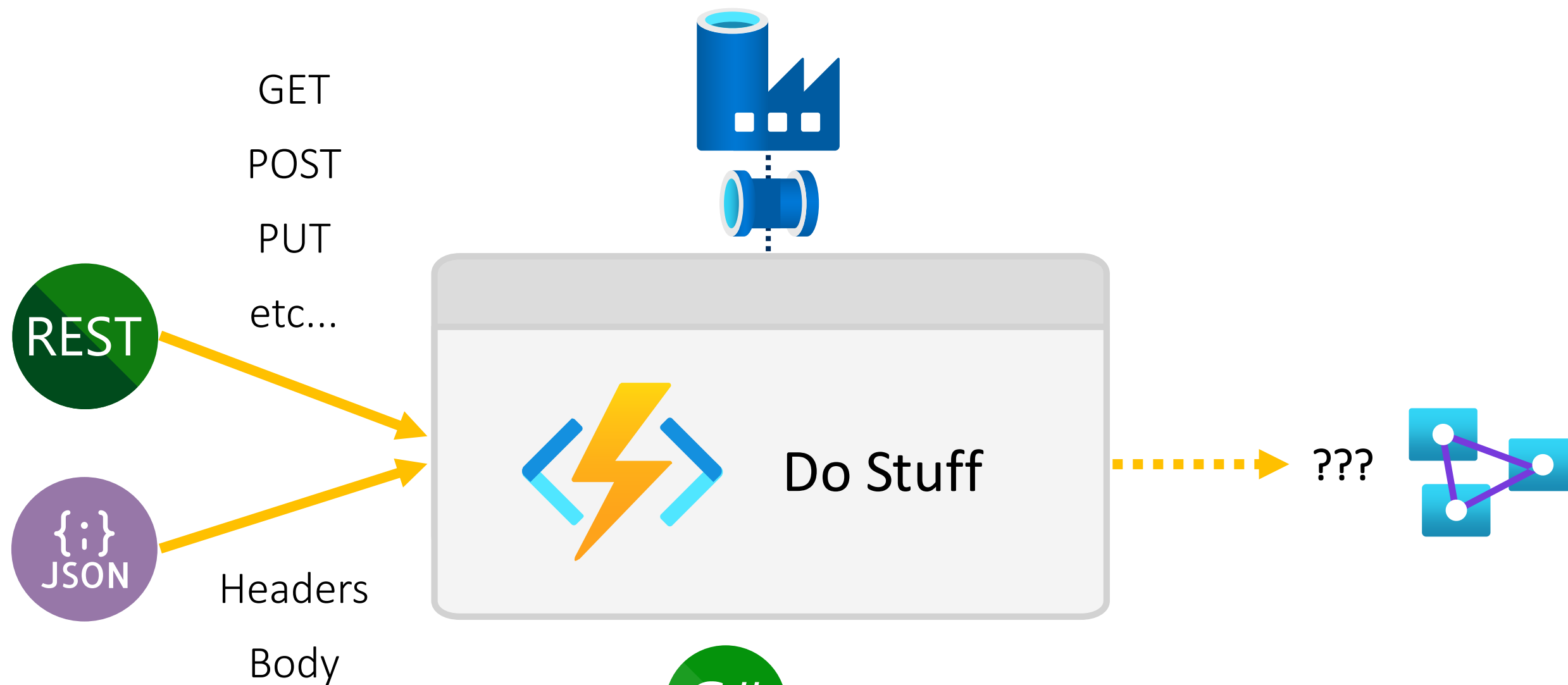




# Azure Function

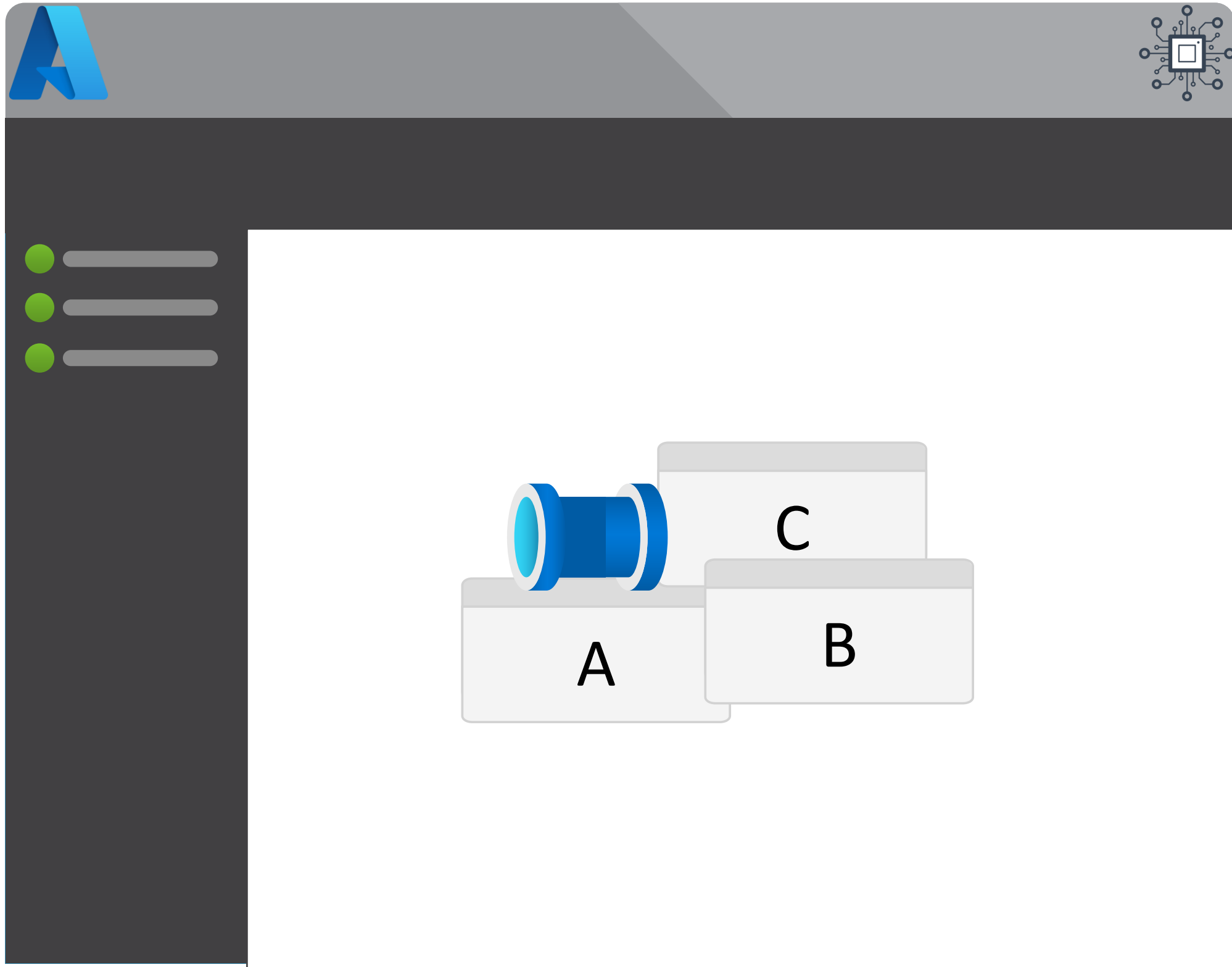


Extend Data Factory with custom serverless code executions via REST calls

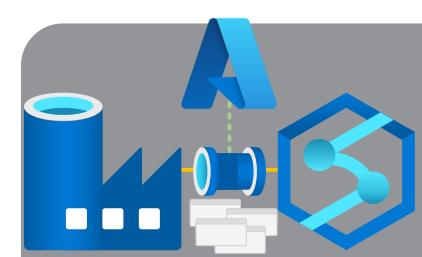


# Module 1

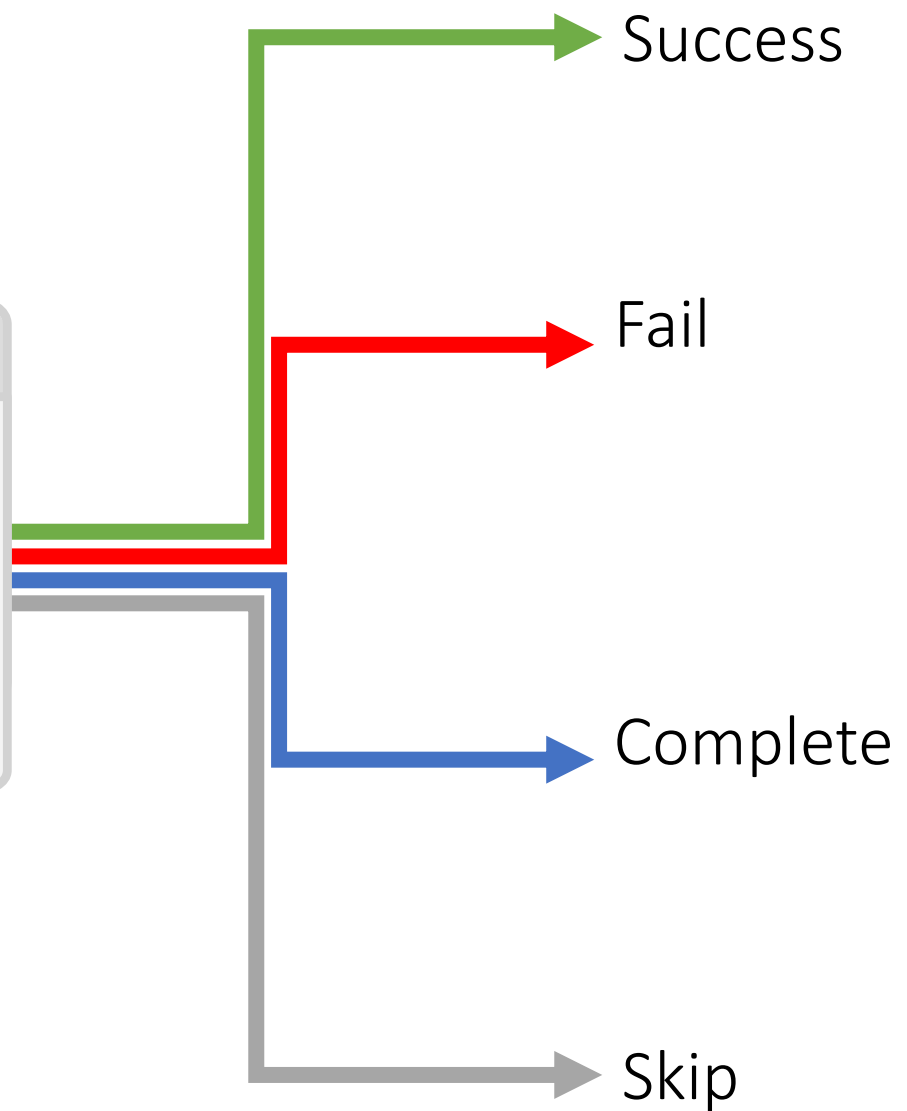
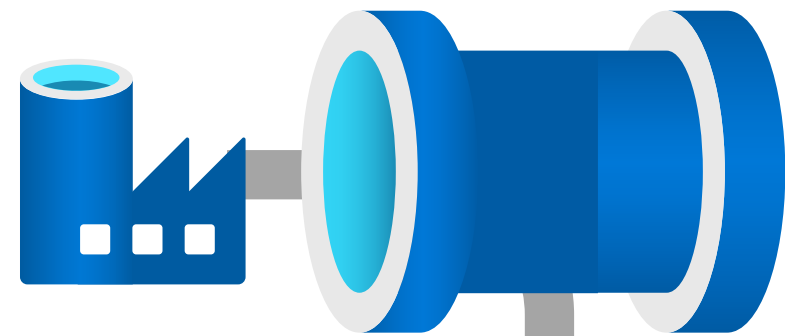
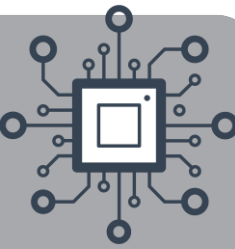
## Pipeline Fundamentals

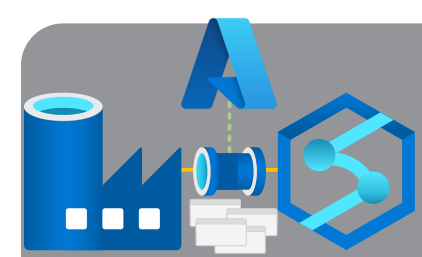


- The History of Azure Orchestration
- Synapse Analytics vs Data Factory
- Integration Components
- Common Activities
- Execution Dependencies

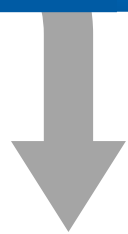
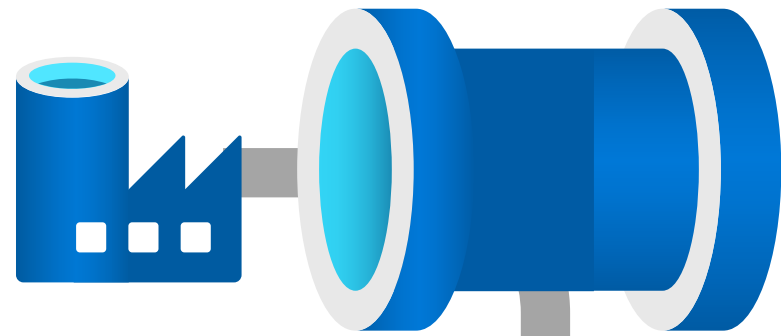
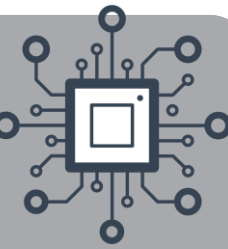


# Execution Dependency Options

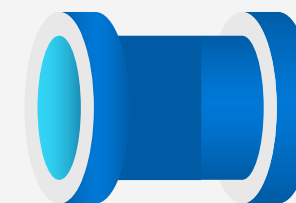




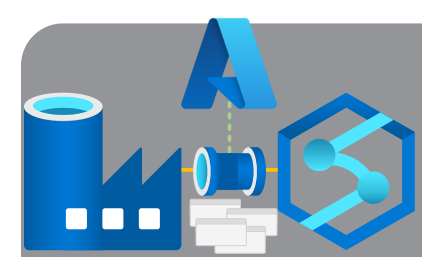
# Execution On Failure



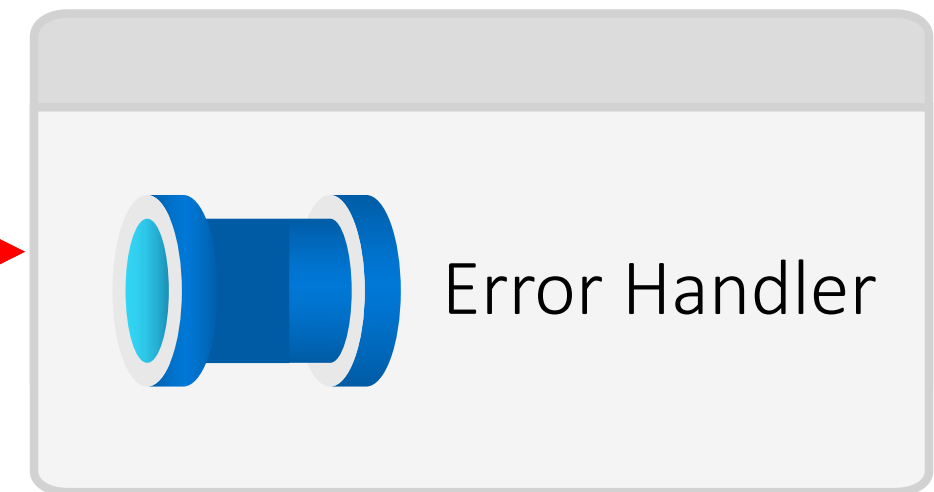
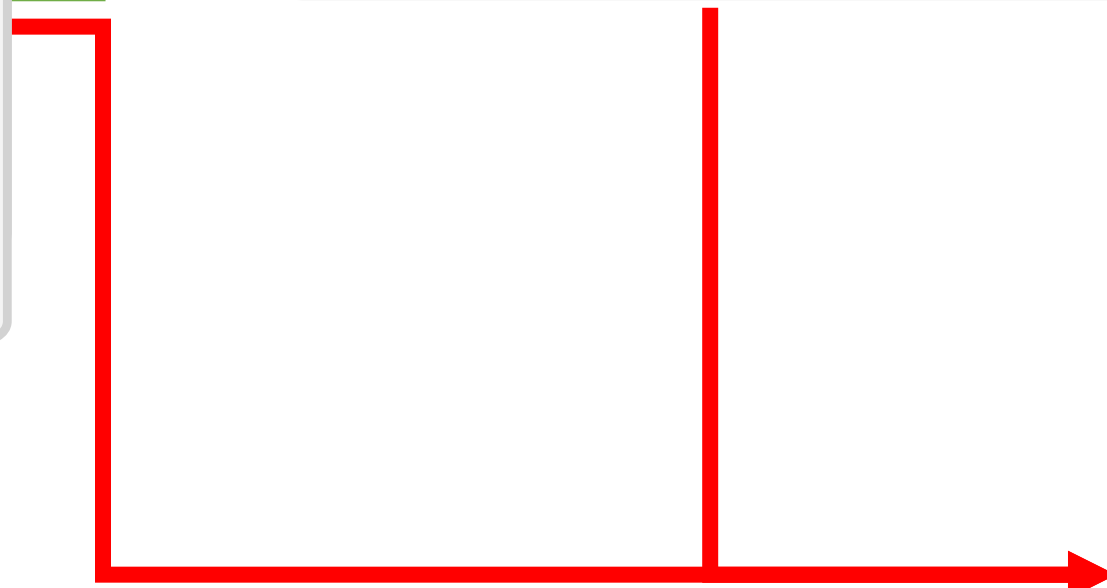
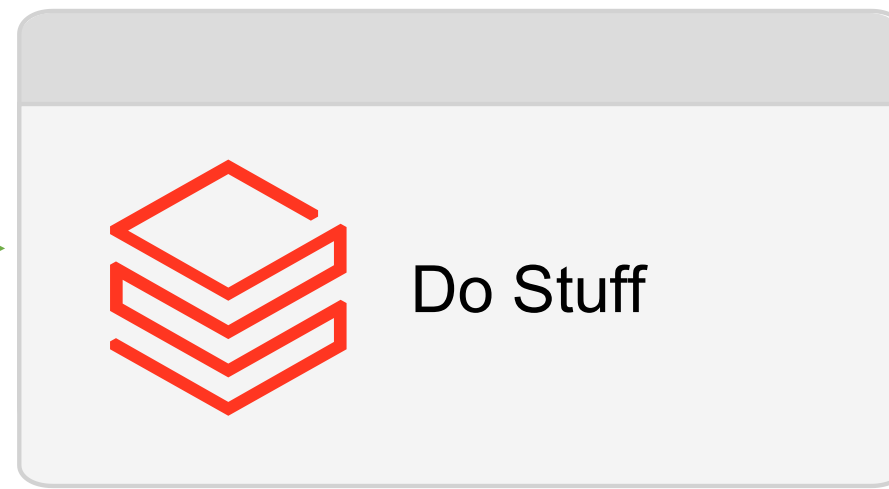
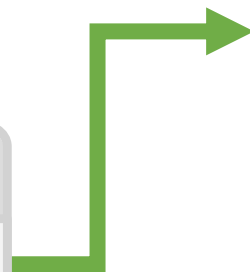
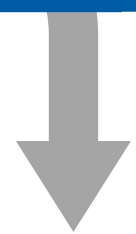
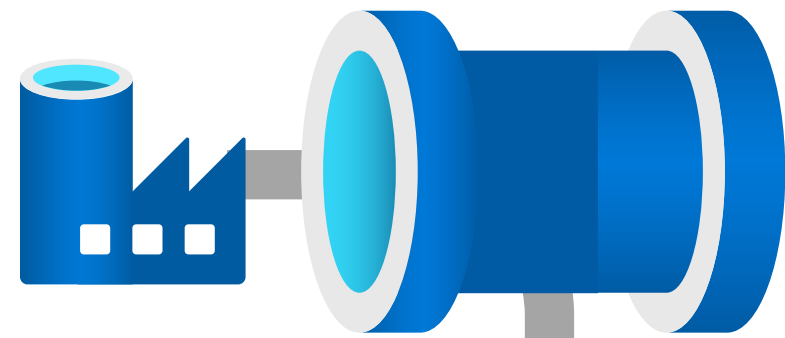
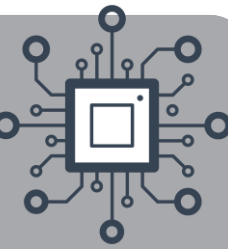
Get  
Values



Error Handler



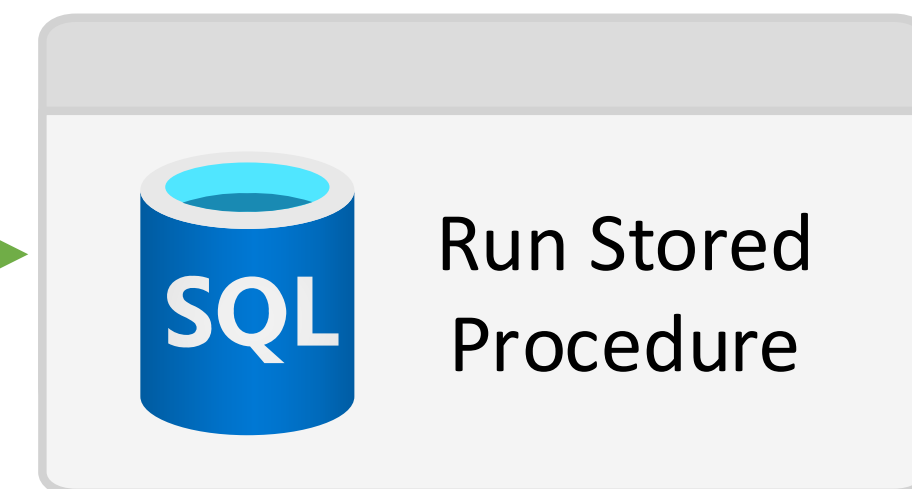
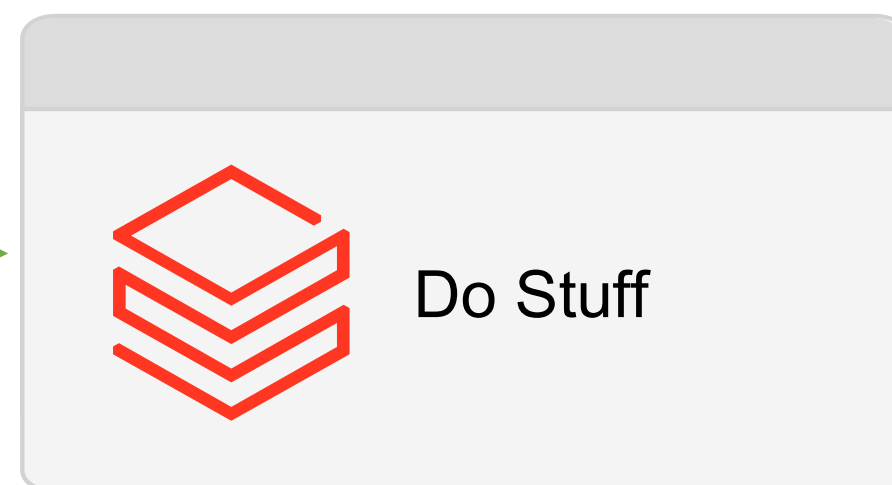
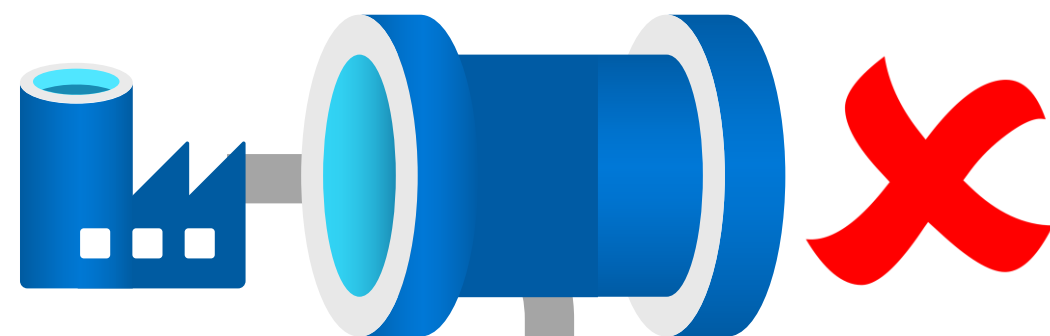
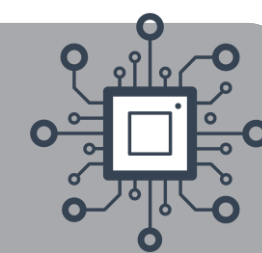
# Execution On Failure or On Success





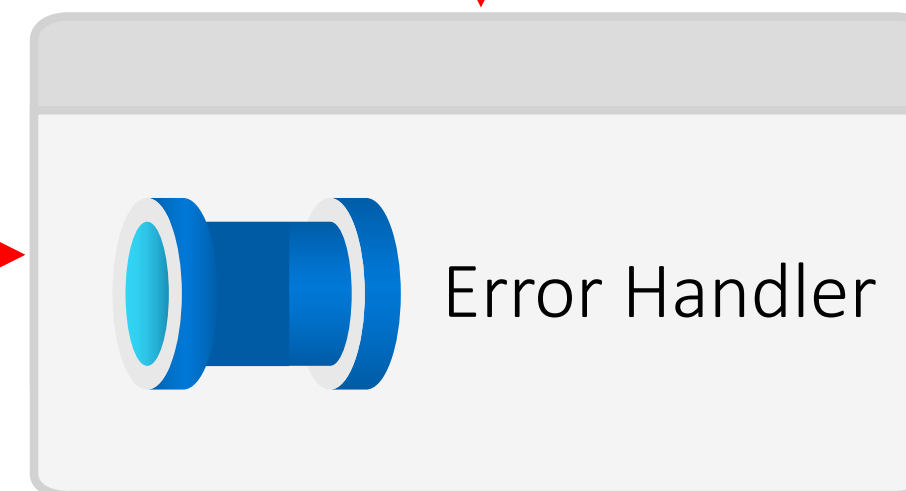


# Execution On ???



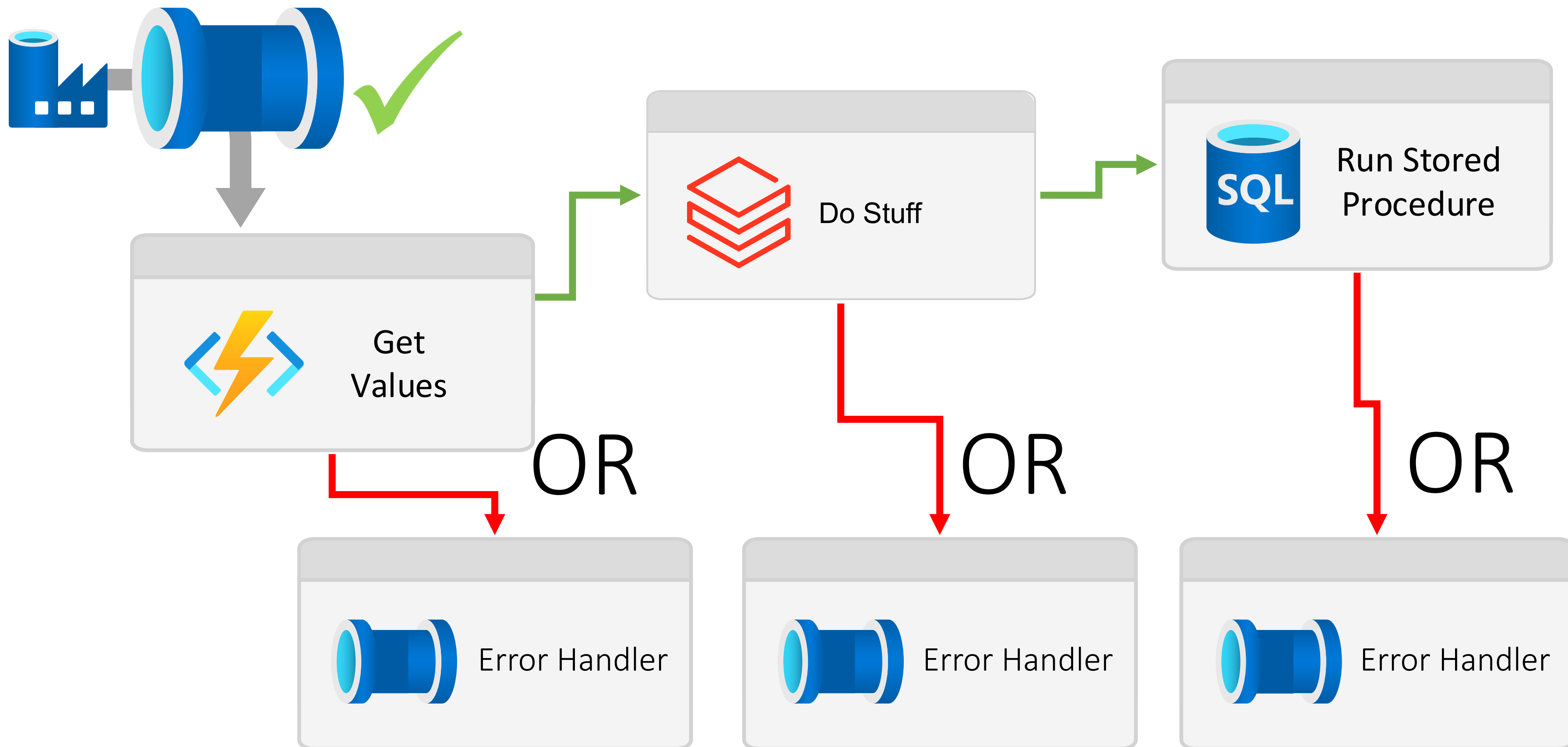
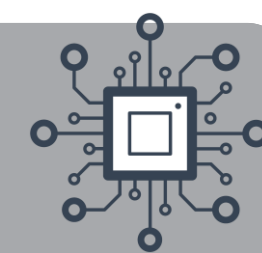
AND

AND



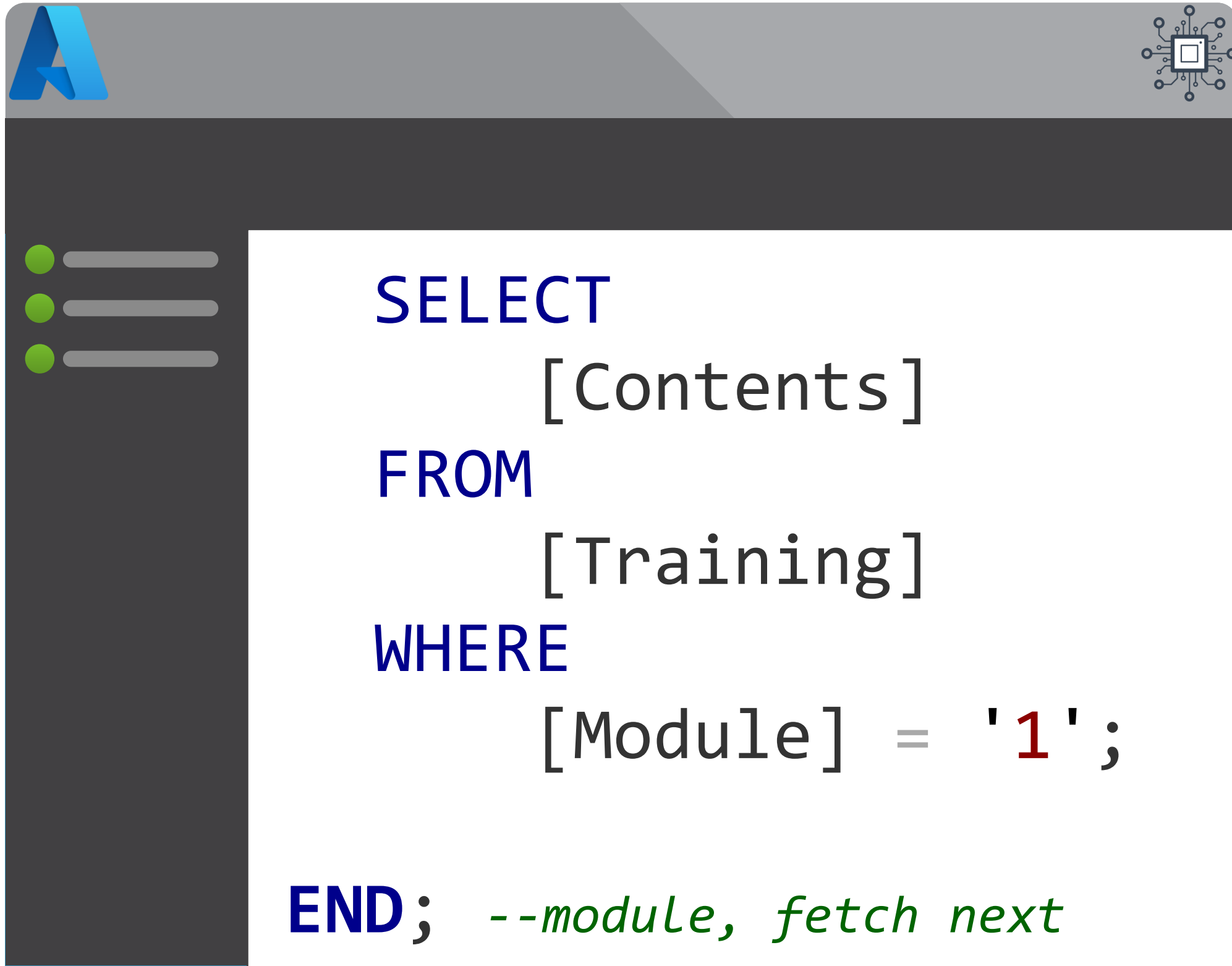


# Execution On Failure or On Success



# Module 1

## Pipeline Fundamentals



- The History of Azure Orchestration
- Synapse Analytics vs Data Factory
- Integration Components
- Common Activities
- Execution Dependencies